

Manlift

ALWAYS LIFTING ALWAYS GROWING

PT. HASTA KARYA ANANTA

Tel: +62 21 -2986-0544
Email: hasta@hka.co.id
Website: www.hka.co.id

Add: Jl. Benteng Betawi, RT.001/RW.015, Tanah Tinggi
Kec. Tangerang, Kota Tangerang
Banten 15119, Indonesia

MANLIFT MOBILE ELEVATING WORK PLATFORMS





CONTENTS

COMPANY PROFILE	02
GALLERY PRODUCTION AND ASSEMBLY	03
SCISSOR LIFT - H SERIES	05
SCISSOR LIFT - E SERIES	06
CRAWLER SCISSOR LIFT	07
ROUGH TERRAIN LIFT	10
VERTICAL MAST LIFT	13
ARTICULATED BOOM LIFT	14
TELESCOPIC BOOM LIFT	22

COMPANY PROFILE

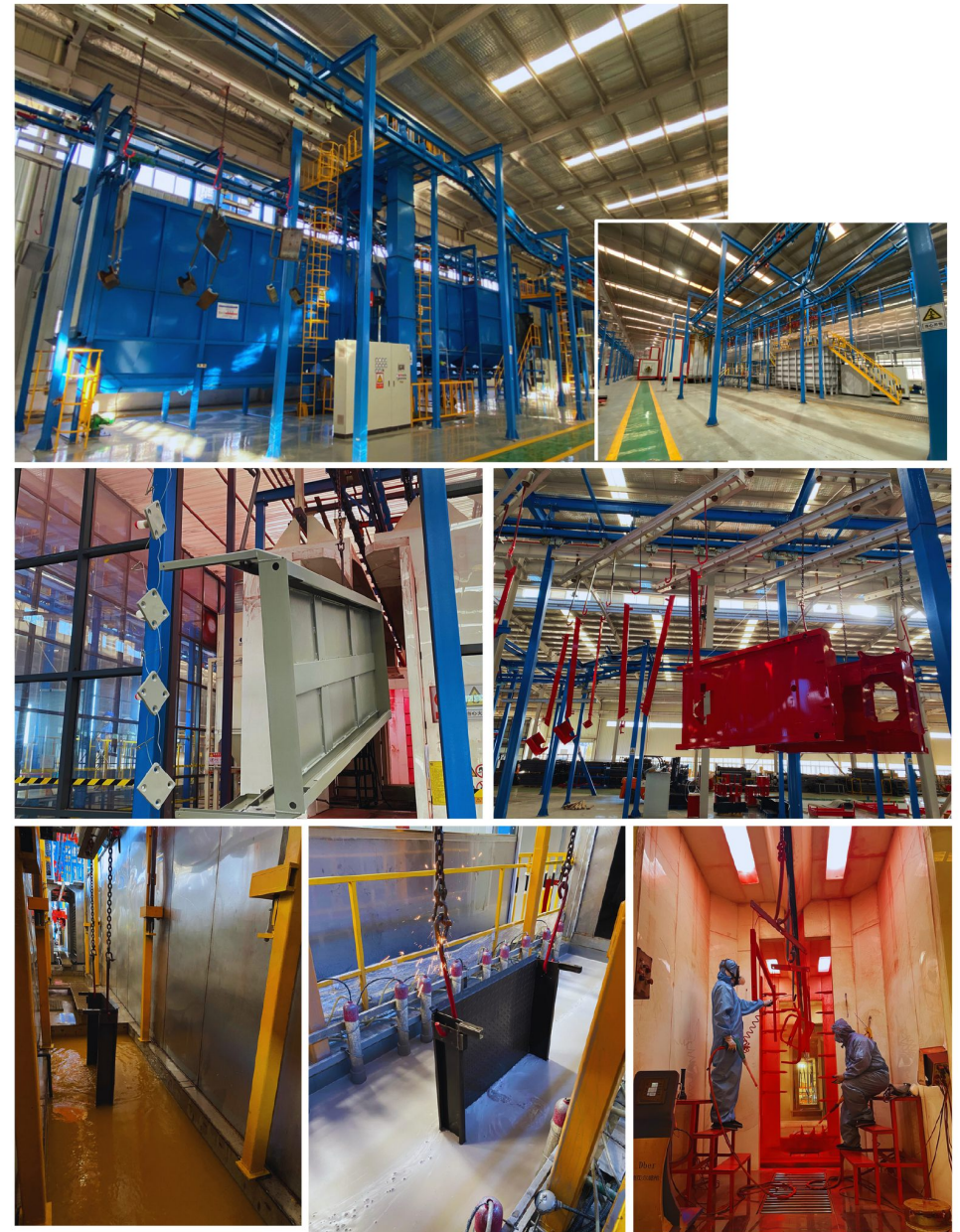
MANLIFT - PT. HASTA KARYA ANANTA

MANLIFT is here to answer the industry's need for safe, efficient, and reliable height access solutions in Indonesia. Backed by the technical expertise and reputation of PT. Hasta Karya Ananta, MANLIFT is committed to providing Scissor Lift and Boom Lift units with the latest technology standards.

We understand that every project presents unique challenges. Therefore, MANLIFT does not merely sell or rent equipment but offers comprehensive solutions through responsive technical support and guaranteed availability of spare parts. With MANLIFT, reach new heights with uncompromising safety.



PRODUCTION AND ASSEMBLY WORKSHOP



Manlift

Mahlit



Professional testing site, comprehensive safety function testing to ensure design safety.

This product has passed 100,000 fatigue tests, climbing ability, road potholes, rollovers, and other tests.

H Series

GB/CE/ANSI Compliance

HIGHLIGHTS

- Optimized matching, high cycle times, better endurance.
- Precise control greatly improves the smoothness of operating.
- Large ground clearance, stronger passability

Low Maintenance Cost

- Universal and modular design, easy maintenance.
- Swing out trays of batteries and hydraulic system.
- More durable, stable and safe.

Configurations Standard

Folding Guardrails	Platform Self-lock Door	Safety Arm
Emergency Stop	Charging Protection	Emergency Descent
Hour Meter	Pothole Protector	Proportional Control
Flashing Beacon	Automatic Braking System	Tilt Sensor
Self-diagnosis	Forklift Hole	Full Height Drive
Extension Platform	Motion Alarm	Horn

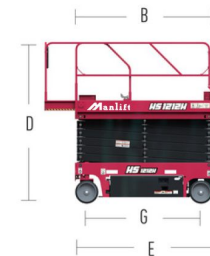
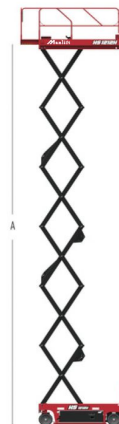
Optional

- Load Sensing System
- AC Power to the Platform
- Air Pipe to the Platform



Always Lifting
Always Growing

MODEL	HS0507H	HS0607H	HS0608H	HS0808H	HS0812H	HS1012H	HS1212H	HS1413H
Max. Working Height(In/out)	6.5m/0m	7.8m/7m	7.9m/7.9m	9.9m/8m	9.8m/9.8m	11.8m/11.8m	13.8m/9.5m	15.7m/10m
A-Max. Platform Height(In/out)	4.5m/0m	5.8m/5m	5.9m/5.9m	7.9m/6m	7.8m/7.8m	9.8m/9.8m	11.8m/7.5m	13.7m/8m
B-Platform Length	1.35m	1.63m	2.26m	2.26m	2.26m	2.26m	2.26m	2.64m
C-Platform Width	0.7m	0.74m	0.81m	0.81m	1.12m	1.12m	1.12m	1.12m
Extension Size	0.6m	0.9m	0.9m	0.9m	0.9m	0.9m	0.9m	0.9m
D-Heights (Rails Up)	2.1m	2.17m	2.24m	2.36m	2.36m	2.51m	2.62m	2.62m
Height (Rails Down)	1.74m	1.83m	1.84m	1.96m	1.83m	1.96m	2.09m	2.1m
E-Length (with Ladder)	1.60m	1.86m	2.43m	2.43m	2.49m	2.49m	2.49m	2.84m
F-Overall Width	0.76m	0.76m	0.81m	0.81m	1.18m	1.18m	1.19m	1.25m
G-Wheel Base	1.17m	1.32m	1.87m	1.87m	1.87m	1.87m	1.87m	2.22m
H-Clearance (Stowed)	0.05m	0.06m	0.1m	0.1m	0.1m	0.1m	0.1m	0.1m
I-Clearance (Raised)	0.02m	0.02m	0.02m	0.02m	0.02m	0.02m	0.02m	0.02m
PERFORMANCE								
Platform Capacity	230kg	230kg	380kg	230kg	450kg	320kg	320kg	250kg
Extension Capacity	113kg	113kg	113kg	113kg	113kg	113kg	113kg	113kg
Max. Occupancy(in/out)	2/0	2/1	2/1	2/1	2/1	2/1	2/1	2/1
Max. Drive Speed (Stowed)	3.5km/h	4km/h	3.5km/h	3.5km/h	3.5km/h	3.5km/h	3.5km/h	3.5km/h
Drive Speed (Raised)	0.8km/h	0.8km/h	0.8km/h	0.8km/h	0.8km/h	0.8km/h	0.8km/h	0.8km/h
Turning Radius (Out.)	1.60m	1.55m	2.1m	2.1m	2.3m	2.3m	2.3m	2.3m
Up/Down Time	25/20s	16/34s	30/34s	31/40s	35/40s	62/39s	65/60s	80/60s
Gradeability	25%	25%	25%	25%	25%	25%	25%	25%
Max. Slope	1.5°/3°	1.5°/3°	1.5°/3°	1.5°/3°	1.5°/3°	1.5°/3°	1.5°/3°	1.5°/3°
Control	switch	Proportional	Proportional	Proportional	Proportional	Proportional	Proportional	Proportional
Drive	FWD	FWD	FWD	FWD	FWD	FWD	FWD	FWD
Multi Disc Brake	Rear	Rear	Rear	Rear	Rear	Rear	Rear	Rear
Tires (mm)	305mmX100mm	305mmX100mm	381mmX127mm	381mmX127mm	381mmX127mm	381mmX127mm	381mmX127mm	381mmX127mm
Max. Wind Speed	-	12.5m/s	12.5m/s	12.5m/s	12.5m/s	12.5m/s	12.5m/s	12.5m/s
POWER								
Batteries (V/Ah)	24V/100Ah	24V/200Ah	24V/200Ah	24V/200Ah	24V/200Ah	24V/200Ah	24V/200Ah	24V/300Ah
Charger	100-240VAC/10A	100-240VAC/10A	100-240VAC/10A	100-240VAC/10A	100-240VAC/10A	100-240VAC/10A	100-240VAC/10A	100-240VAC/10A
WEIGHT								
Weight	995kg	1560kg	2050kg	2240kg	2550kg	2840kg	3020kg	3530kg



E Series

GB/CE/ANSI Compliance

HIGHLIGHTS

- Double driving efficiency.
- Large platform capacity for different working conditions.
- Multi-disc braking, flexible maneuvering.

Low Maintenance Cost

- Universal and modular design, easy maintenance.
- Swing out trays of batteries and hydraulic system.
- More durable, stable and safe.

Configurations Standard

Folding Guardrails	Platform Self-lock Door	Safety Arm
Emergency Stop	Charging Protection	Emergency Descent
Hour Meter	Pothole Protector	Proportional Control
Flashing Beacon	Automatic Braking System	Tilt Sensor
Self-diagnosis	Forklift Hole	Full Height Drive
Extension Platform	Motion Alarm	Horn

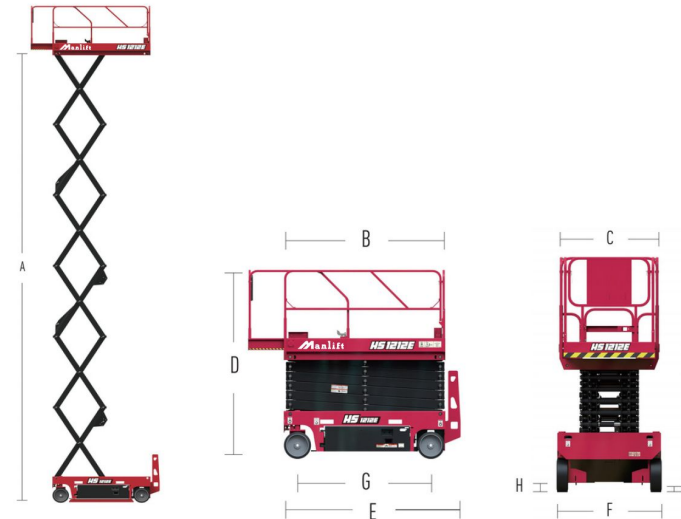
Optional

- Load Sensing System
- AC Power to the Platform
- Air Pipe to the Platform



Always Lifting
Always Growing

MODEL	HS0407E	HS0507E	HS0607E	HS0608E	HS0808E	HS0812E	HS1012E	HS1212E	HS1413E
Max. Working Height(In/out)	5.6m/0m	6.6m/0m	7.8m/7m	7.9m/7.9m	9.9m/8m	9.8m/9.8m	11.8m/11.8m	13.8m/9.5m	15.7m/10m
A-Max. Platform Height(In/out)	3.6m/0m	4.6m/0m	5.8m/5m	5.9m/5.9m	7.9m/6m	7.8m/7.8m	9.8m/9.8m	11.8m/7.5m	13.7m/8m
B-Platform Length	1.35m	1.35m	1.63m	2.26m	2.26m	2.26m	2.26m	2.26m	2.64m
C-Platform Width	0.7m	0.7m	0.74m	0.81m	0.81m	0.81m	1.12m	1.12m	1.12m
Extension Size	0.6m	0.6m	0.9m	0.9m	0.9m	0.9m	0.9m	0.9m	0.9m
D-Heights (Rails Up)	1.97m	2.11m	2.17m	2.24m	2.36m	2.36m	2.51m	2.62m	2.62m
Height (Rails Down)	1.65m	1.77m	1.83m	1.84m	1.96m	1.83m	1.96m	2.09m	2.1m
E-Length (with Ladder)	1.53m	1.53m	1.86m	2.43m	2.43m	2.49m	2.49m	2.49m	2.84m
F-Overall Width	0.76m	0.81m	0.76m	0.81m	0.81m	1.18m	1.18m	1.19m	1.25m
G-Wheel Base	1.12m	1.11m	1.32m	1.87m	1.87m	1.87m	1.87m	1.87m	2.22m
H-Clearance (Stowed)	0.05m	0.05m	0.08m	0.1m	0.1m	0.1m	0.1m	0.1m	0.1m
I-Clearance (Raised)	0.02m	0.02m	0.02m	0.02m	0.02m	0.02m	0.02m	0.02m	0.02m
PERFORMANCE									
Platform Capacity	240kg	230kg	230kg	380kg	230kg	450kg	320kg	320kg	250kg
Extension Capacity	113kg	113kg	113kg	113kg	113kg	113kg	113kg	113kg	113kg
Max. Occupancy(In/out)	2/0	2/0	2/1	2/1	2/1	2/1	2/1	2/1	2/1
Max. Drive Speed (Stowed)	4km/h	4km/h	4km/h	3.5km/h	3.5km/h	3.5km/h	3.5km/h	3.5km/h	3.5km/h
Drive Speed (Raised)	0.5km/h	0.5km/h	0.8km/h	0.8km/h	0.8km/h	0.8km/h	0.8km/h	0.8km/h	0.8km/h
Turning Radius (Out.)	1.5m	1.7m	1.55m	2.1m	2.2m	2.3m	2.3m	2.3m	2.3m
Up/Down Time	25/25s	25/20s	16/34s	30/34s	31/40s	35/40s	62/39s	65/60s	80/60s
Gradeability	25%	25%	25%	25%	25%	25%	25%	25%	25%
Max. Slope	1.5°/3°	1.5°/3°	1.5°/3°	1.5°/3°	1.5°/3°	1.5°/3°	1.5°/3°	1.5°/3°	1.5°/3°
Control	Switch	Switch	Proportional	Proportional	Proportional	Proportional	Proportional	Proportional	Proportional
Drive	RWD	RWD	FWD	FWD	FWD	FWD	FWD	FWD	FWD
Multi Disc Brake	Rear	Rear	Front	Front	Front	Front	Front	Front	Front
Max. Wind Speed	-	-	12.5m/s	12.5m/s	12.5m/s	12.5m/s	12.5m/s	12.5m/s	12.5m/s
Tires (mm)	230X80mm	305X100mm	305X100mm	381X127mm	381X127mm	381X127mm	381X127mm	381X127mm	381X127mm
POWER									
Batteries (V/Ah)	24V/85Ah	24V/100Ah	24V/200Ah	24V/200Ah	24V/200Ah	24V/200Ah	24V/200Ah	24V/200Ah	24V/300Ah
Charger	100-240VAC/6.3A	100-240VAC/6.3A	100-240VAC/10A	100-240VAC/10A	100-240VAC/10A	100-240VAC/10A	100-240VAC/10A	100-240VAC/10A	100-240VAC/10A
WEIGHT									
Weight	880kg	995kg	1573kg	2050kg	2257kg	2580kg	2840kg	3045kg	3530kg



HC Series

GB/CE/ANSI Compliance

HIGHLIGHTS

- Compact structure, light weight, accessible elevators.
- Motor and crawler drive, lower noise, stronger passability.
- Large capacity batteries, better endurance.

Configurations Standard

- | | |
|---------------------|----------------------------|
| Automatic Braking | Emergency Stop Tilt Sensor |
| Extension Platform | Safety Arm |
| Folding Guardrails | Self-diagnosis |
| Charging Protection | Platform Self-lock Door |
| Hour Meter | Flashing Beacons |
| Motion Alarm | Emergency Descent |
| Horn | |

Optional

- Working Lamp on the Platform
- Load Sensing System
- AC Power to the Platform
- Air Pipe to the Platform



Always Lifting
Always Growing

MODEL	HC0507E	HC0610E	HC1216E	HC1216E-R	HC1416E-R
A-Max. Platform Height(In/out)	4.5m/0m	5.8m/5.8m	11.8m/11.8m	11.8m/11.8m	13.8m/13.8m
Max. Working Height(In/out)	6.5m/0m	7.8m/7.8m	13.8m/13.8m	13.8m/13.8m	15.8m/15.8m
B-Platform Length	1.34m	1.67m	2.26m	2.26m	2.64m
C-Platform Width	0.72m	0.74m	1.12m	1.12m	1.12m
Extension Size	0.6m	0.9m	0.9m	0.9m	0.9m
D-Heights (Rails Up)	2.07m	2.27m	2.63m	2.63m	2.71m
Height (Rails Down)	1.71m	1.91m	2.03m	2.03m	2.01m
E-Overall Width with Outriggers	1.48m	2.30m	2.83m	2.83m	3.02m
F-Overall Width	0.79m	1.25m	1.6m	1.6m	1.6m
G- Ground Clearance	70mm	190mm	150mm	150mm	146mm
PERFORMANCE					
Platform Capacity	230kg	230kg	320kg	320kg	250kg
Extension Capacity	113kg	113kg	113kg	113kg	113kg
Max. Occupancy(in/out)	1/0	2/2	2/2	2/2	2/2
Max. Wind Speed	0m/s	12.5m/s	12.5m/s	12.5m/s	12.5m/s
Drive Speed (Stowed)	4km/h	3.2km/h	4km/h	4km/h	4km/h
Turning Radius	Rotate in Place	Rotate in Place	Rotate in Place	Rotate in Place	Rotate in Place
Up/Down Time	25/20s	23/22s	65/60s	65/60s	76/53s
Gradeability	25%	35%	40%	40%	40%
Max. Slope	1.5°/3°	/	/	/	/
Leveling angle of the legs	/	8°/14°	12°/5°	12°/5°	12°/5°
Drive	Front Crawler	Rear Crawler	Rear Crawler	Rear Crawler	Rear Crawler
Crawler (mm)	150mmX72mmX4	180mmX72mmX5	300mmX72mmX6	230mmX90mmX5	300mmX101mmX4
POWER					
Batteries (V/Ah)	2X12V/100Ah	4X6V/200Ah	8X6V/200Ah	8X6V/200Ah	8X6V/300Ah
Charger	100-240VAC/6.3A	100-240VAC/10A	100-240VAC/13.5A	100-240VAC/13.5A	100-240VAC/13.5A
WEIGHT					
Weight	920kg	1900kg	3480kg	3660kg	4150kg



HC0607EA

GB/CE/ANSI Compliance

HIGHLIGHTS

- Simple layout and easy maintenance and service.
- Pure electric drive with zero emissions, low noise, and strong gradeability.
- Neutral steering feature suitable for complicated working conditions.
- Long battery endurance.

FEATURES Standard

- Automatic Braking System
- One-Way Extension Platform
- Folding Guardrails
- platform self-lock door
- Charging Protection System
- Proportional Control
- Emergency Decent System
- Motion Alarm
- Emergency Stop
- Tilt Protection System
- Safety access support bar
- Fault Diagnosis System
- Forklift Hole
- Flashing Beacons
- Hour meter
- Horn
- Load Sensing System

Optional

- AC Power to the Platform
- Air Pipe to the Platform



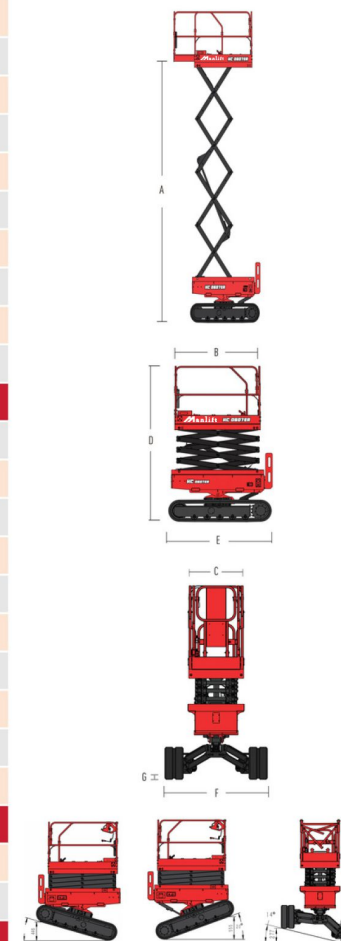
Always Lifting
Always Growing

MODEL	HC0607EA
A-Max. Platform Height(In/out)	5.9m
Max.Working Height	7.9m
B-Platform Length	1.63m
C-Platform Width	0.74m
Extension Size	0.9m
D-Heights (Rails Up)	2.39m
Height (Rails Down)	2m
E-Length (with Ladder)	2.02m
F-Overall Width	1.47m/1.3m
G- Ground Clearance	80mm

PERFORMANCE	
Platform Capacity	250kg
Extension Capacity	113kg
Max. Occupancy(in/out)	2/1
Drive Speed (Stowed)	2.4km/h
Turning Radius	Rotate in Place
Up/Down Time	16/34s
Gradeability	40%
Max. Slope	X(20°/-16°) ;Y(14°/-14°)
Drive	Rear Crawler
Crawler (mm)	250mmX72mmX60

POWER	
Batteries (V/Ah)	8X12V/160Ah
Charger	100-240VAC/13.5A

WEIGHT	
Weight	1890kg



HC1018EA

GB/CE/ANSI Compliance

HIGHLIGHTS

- Crawler chassis capable of leveling the equipment on staggered-height surfaces.
- One-click vehicle leveling and strong gradeability for operations on slopes.
- Simple layout and easy maintenance and service.
- Pure electric drive with zero emissions and neutral steering feature suitable for complicated working conditions.
- Long battery endurance.

FEATURES Standard

- Automatic Braking System
- One-Way Extension Platform
- Folding Guardrails
- platform self-lock door
- Charging Protection System
- Proportional Control
- Emergency Decent System
- Motion Alarm
- Emergency Stop
- Tilt Protection System
- Safety access support bar
- Fault Diagnosis System
- Forklift Hole
- Flashing Beacons
- Hour meter
- Horn
- Load Sensing System

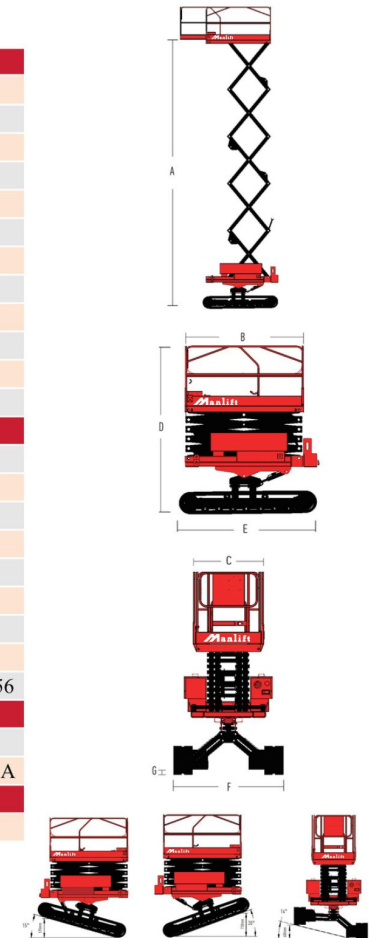
Optional

- AC Power to the Platform
- Air Pipe to the Platform



Always Lifting
Always Growing

MODEL	HC1018EA
A-Max. Platform Height(In/out)	9.6m
Max.Working Height	11.6m
B-Platform Length	2.27m
C-Platform Width	1.4m
Extension Size	0.9m
D-Heights (Rails Up)	2.96m/2.53m
Height (Rails Down)	2.13m/1.73m
E-Length	2.67m
F-Overall Width	1.73m/2.01m
G- Ground Clearance	85mm
Max Outrigger Leveling (Front to Rear)	20°/-15°
Max Outrigger Leveling (Side to Side)	14°/-14°
PERFORMANCE	
Platform Capacity	320kg
Extension Capacity	113kg
Max. Occupancy(in/out)	2/1
Drive Speed (Stowed)	2.4km/h
Turning Radius	Rotation in Situ
Up/Down Time	60/40S
Gradeability	40%
Drive	Rear Crawler
Crawler (mm)	300mm*101mm*56
POWER	
Batteries (V/Ah)	48V/200Ah
Charger	100-240VAC/13.5A
WEIGHT	
Weight	3500KG



HS1623RT

GB/CE/ANSI Compliant

HIGHLIGHTS

- Strong off-road performance.
- Rough terrain tyre, large ground clearance, stronger passability.
- Engine drive, more powerful.

Configurations

- | | |
|----------------------|-------------------------|
| Automatic Braking | Platform Self-lock Door |
| Proportional Control | Self-diagnosis |
| Emergency Descent | Flashing Beacons |
| Emergency Stop | Tilt Sensor |
| Extension Platform | Safety Arm |
| Folding Guardrails | Outriggers |
| Motion Alarm | Horn |
| Hour Meter | |

Optional

- Working Lamp on the Platform
- Load Sensing System
- AC Power to the Platform
- Air Pipe to the Platform



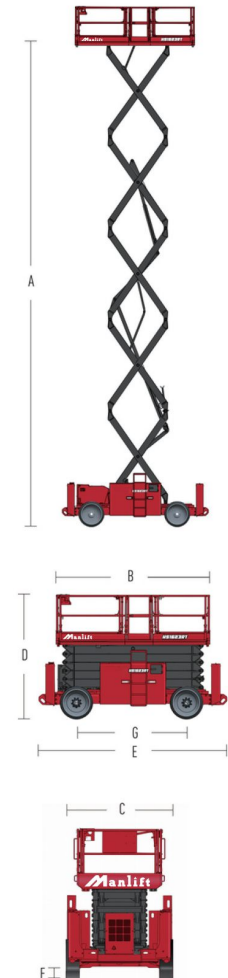
Always Lifting
Always Growing

MODEL	HS1623RT
Max. Working Height	17.95m
A-Max. Platform Height(In/out)	15.95m
Platform Dimension (B×C)	3.81X1.83m
Front Platform Extension Length	1.536m
Rear Platform Extension Length	1.231m
D-Heights (Rails Up)	3.21m
Height (Rails Down)	2.44m
E-Length (with Ladder)	4.88m
Overall Width with Outriggers	2.29m
F-Ground Clearance	260mm
G-Wheel Base	2862mm

PERFORMANCE	
Platform Capacity	680kg
Extension Capacity	230kg
Max. Occupancy(in/out)	4/4
Max. Wind Speed	12.5m/s
Drive Height	8.5m
Drive Speed (Stowed)	6.1km/h
Drive Speed (Raised)	1.1km/h
Up/Down Time	55/65s
Turning Radius (Out.)	3.9m
Tilt Rating (Front to Rear/Side to Side)	3°/2°
Gradeability	40%
Max Outrigger Leveling (Front to Rear)	7°
Max Outrigger Leveling (Side to Side)	12°
Tires Size (mm)	33X12-20

POWER	
Engine	Kubota V2403
Drive	FWD

WEIGHT	
Hydraulic Oil Tank Capacity	120L
Fuel Tank Capacity	120L
Weight	7980kg



HS1218ERT

GB/CE/ANSI Compliant

HIGHLIGHTS

- Drive on all rough terrains.
- Large ground clearance, stronger passability.
- AC motor drive, smooth driving, low noise.
- Large capacity batteries, better endurance.

Configurations

- | | |
|----------------------|-------------------------|
| Automatic Braking | Self-diagnosis |
| Proportional Control | Charging Protection |
| Emergency Descent | Flashing Beacons |
| Hour Meter | Tilt Sensor |
| Motion Alarm | Safety Arm |
| Emergency Stop | Platform Self-lock Door |
| Extension Platform | Horn |
| Folding Guardrails | |

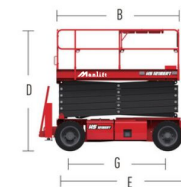
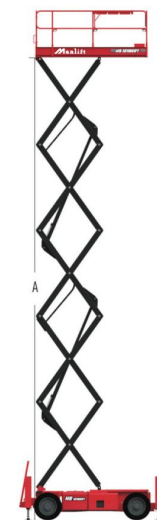
Optional

- Working Lamp on the Platform
- Load Sensing System
- AC Power to the Platform
- Air Pipe to the Platform Outriggers



Always Lifting
Always Growing

MODEL	HS1218ERT
Max. Working Height	14m
A-Max. Platform Height(In/out)	12m
B-Platform Length	2.92m
C-Platform Width	1.65m
Extension Size	0.65m(Double Side)
D-Heights (Rails Up)	2.88m
Height (Rails Down)	2.10m
E-Length (with Ladder)	3.75m
F-Overall Width	1.75m
G-Wheel Base	2.3m
H-Ground Clearance	0.2m
PERFORMANCE	
Platform Capacity	360kg
Extension Capacity	113kg
Max. Occupancy(in/out)	3/2
Max. Drive Speed (Stowed)	4.8km/h
Drive Speed (Raised)	0.6km/h
Turning Radius (In.)	2.29m
Turning Radius (Out.)	4.88m
Up/Down Time	54s/50s
Gradeability	45%
Max. Slope	2°/3°
Control	Proportional Control
Drive	Four-Wheel
Multi Disc Brake	Four-Wheel
Tires (mm)	26X12-16
Max. Wind Speed	12.5m/s
POWER	
Batteries (V/Ah)	8X6V/370Ah
Charger	100-240V AC/13.5A
WEIGHT	
Weight	5730kg



HS2025ERT

GB/CE/ANSI Compliant

HIGHLIGHTS

- All-terrain and all-road driving.
- Off-road tires with large ground clearance and high gradeability.
- AC motor drive, smooth driving, and excellent inching motion.
- Full-travel load capacity up to 750 kg.
- 48v/620Ah high-capacity battery pack for strong endurance
- Strong power and flexible manipulation from four-wheel drive and four-way steering.
- 2.7m platform extension for stop at any point and a large operating space.

Configurations

- Automatic Braking System
- Emergency Stop
- Flashing Beacons
- Proportional Control
- Emergency Decent System
- Folding Guardrails
- Safety access support bar
- Hour meter
- Motion Alarm
- Charging Protection System
- Horn

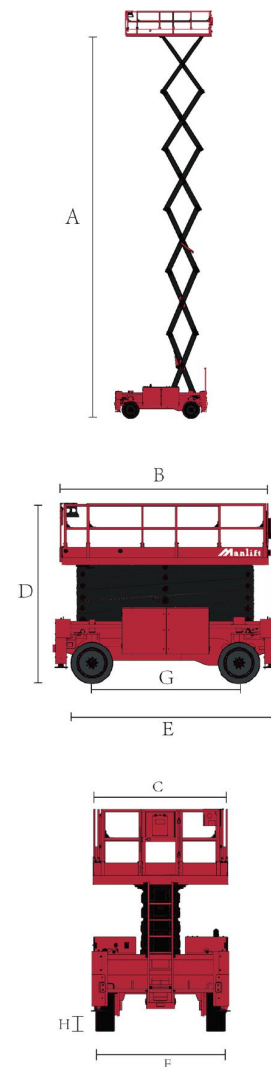
Optional

- Load Sensing System
- AC Power to the Platform



Always Lifting
Always Growing

MODEL	HS2025ERT
Max. Working Height	22m
A-Max. Platform Height(In/out)	20m
B-Platform Length	4.54m
C-Platform Width	2.39m
Extension Size	2.7m
D-Heights (Rails Up)	3.95m
Height (Rails Down)	3.1m
E-Length (with Ladder)	4.94m
F-Overall Width	2.47m
G-Wheel Base	3.2m
H-Ground Clearance	0.4m
PERFORMANCE	
Platform Capacity	750kg
Extension Capacity	750kg
Max. Occupancy(in/out)	4/4
Max. Drive Speed (Stowed)	5.0km/h
Drive Speed (Raised)	0.4km/h
Turning Radius (In.)	1.5m
Turning Radius (Out.)	3.4m
Up/Down Time	90s/75s
Gradeability	30%
Max. Slope	2°/3°
Control	Proportional Control
Drive	Four-Wheel
Multi Disc Brake	Four-Wheel
Tires (mm)	36X14-20
Max. Wind Speed	12.5m/s
POWER	
Batteries (V/Ah)	48V/620Ah
Charger	100-240VAC/16A
WEIGHT	
Weight	14550kg



HM0608E

GB/CE/ANSI Compliant

HIGHLIGHTS

- Electric drive, zero emission, energy-saving and environmentally friendly.
- Accurate control and smooth driving.
- Simple design and easy maintenance.
- The two sides of the rotating tray are convenient for maintenance services.
- High precision platform overload sensing system reduces accidental false alarms and shutdowns.

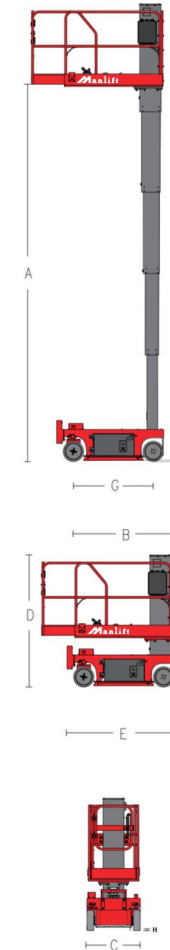
Configurations Standard

Self-lock Gate	Overload Sensing System
Pothole Grand System	AC Power to the Platform
Automatic Braking System	Fault Diagnosis System
Motion Alarm	One-way Extension Platform
Emergency Decent System	Tilt Protection System
Full Height Drive	Charging Protection System
Emergency Stop Button	Forklift Hole
Flashing Beacons	Horn



Always Lifting
Always Growing

MODEL	HM0608E
Max. Working Height	7.7m
A-Max. Platform Height(In/out)	5.7m
B-Platform Length	1.5m
C-Platform Width	0.78m
Extension Size	0.5m
D-Heights (Rails Up)	1.99m
E-Length (with Ladder)	1.71m
F-Overall Width	0.8m
G-Wheel Base	1.21m
H-Clearance (Stowed)	0.08m
I-Clearance (Raised)	0.02m
PERFORMANCE	
Platform Capacity	200kg
Extension Capacity	113kg
Max. Occupancy(in/out)	1/0
Max. Drive Speed (Stowed)	3.5km/h
Drive Speed (Raised)	0.6km/h
Turning Radius (In.)	0.6m
Turning Radius (Out.)	1.8m
Up/Down Time	32/32s
Gradeability	25%
Max. Slope	1.5°/3°
Drive	Double-Rear
Tires (mm)	305X100mm
POWER	
Batteries (V/Ah)	2X12V/100Ah
Charger	100-240VAC/6.3A
WEIGHT	
Weight	1105kg



HA09RJE

GB/CE/ANSI Compliant

HIGHLIGHTS

- 1.19m ultra-narrow machine, suitable for operation in confined space.
- The central layout, good structural rigidity and small yaw of the boom.
- AC motor drive, smooth driving, good micro-motion.
- High-precision platform load sensing system to reduce accidental false alarm shutdown.
- Integrated rotary reducer ensures smooth rotation.
- The machine has zero emissions, smoother operation and more energy saving.
- The platform contactor alarm device to improve safety; the jib can swing $\pm 90^\circ$ to cross obstacles.

FEATURES Standard

- Horn
- Emergency Stop System
- Proportional Control
- Fault Diagnosis System
- Motion Alarm
- Overload Sensing System
- Flashing Beacons
- AC Power to the Platform
- Self-lock Gate
- Jib Swing
- Automatic Leveling Platform
- Platform Operation Shield
- Electric Emergency Pump
- Anti-extrusion device

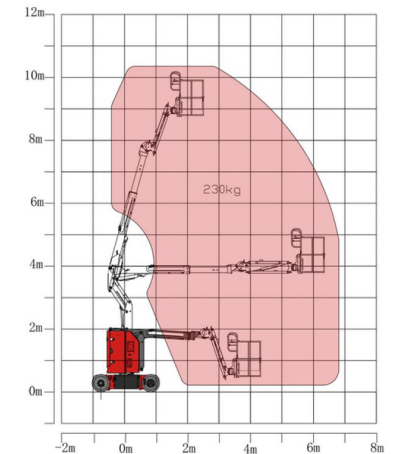
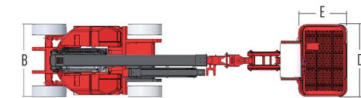
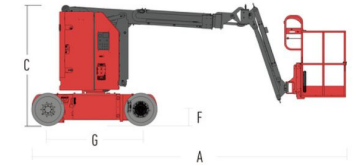
Optional

- Air Tube to the Platform



Always Lifting
Always Growing

MODEL	HA09RJE
Max. Working Height	10.82m
Max. Platform Height	8.82m
Max. Horizontal Extension	6.29m
Max. Up and Over Height	3.77m
A- Length (Stowed)	5.38m
B- Width (Stowed)	1.19m
C- Height (Stowed)	2.04m
D- Platform Length	1.17m
E- Platform Width	0.76m
F-Clearance (Stowed)	0.09m
G-Wheel Base	1.58m
PERFORMANCE	
Platform Capacity	230kg
Max. Drive Speed (Stowed)	4.8km/h
Gradeability	35%
Turning Radius(In.)	1.75m
Turning Radius(Out.)	3.35m
Turntable Rotation	355°Non-Continuous
Vertical JIB rotation	$\pm 90^\circ$
Platform Rotation	$\pm 90^\circ$
Tail Swing	0
Tilt Rating	3°
Max. Wind Speed	12.5m/s
POWER	
Batteries(V/Ah)	48V/310Ah
Charger	100-240VAC/13.5A
Drive Motor	AC48V
Lift Motor	DC48V
Hydraulic Oil Tank Capacity	15L
Tires	24x7x17.5
Auxiliary power	Electric pumps
WEIGHT	
Weight	6900kg



HA12RJE

GB/CE/ANSI Compliant

HIGHLIGHTS

- Mid-mounted layout, good structural rigidity, and little boom swing
- AC motor drive, smooth driving, good micro-motion.
- High-precision platform load sensing system to reduce accidental false alarm shutdown.
- Smoother slew ensured by integrated slewing reducer.
- Smoother actions and more energy saving thanks to zero-emission devices
- Platform contact alarm device ensuring higher safety.
- ±90° fly jib swing to cross obstacles.

FEATURES Standard

- Horn
- Proportional Control
- Motion Alarm
- Flashing Beacons
- platform self-lock door
- Automatic Leveling Platform
- Electric Emergency Pump
- Emergency Stop
- Fault Diagnosis System
- Load Sensing System
- Flying jib swing
- Protective cover for platform operation
- Anti-crush device

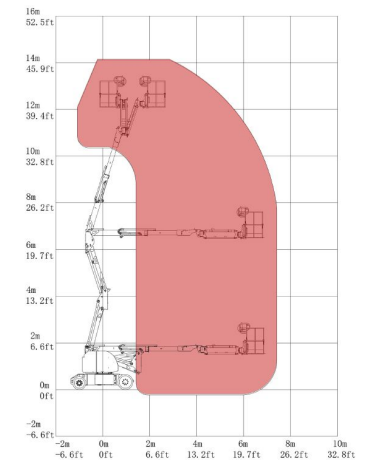
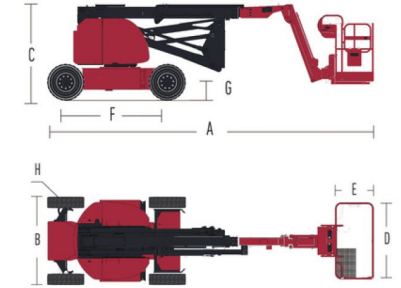
Optional

- Air Pipe to the Platform
- AC Power to the Platform



Always Lifting
Always Growing

MODEL	HA12RJE
Max. Working Height	14.15m
Max. Platform Height	12.15m
Max. Horizontal Extension	6.83m
Max. Up and Over Height	6.54m
A- Length (Stowed)	6.16m
B- Width (Stowed)	1.5m
C- Height (Stowed)	1.92m
D- Platform Length	1.17m
E- Platform Width	0.76m
F-Clearance (Stowed)	0.02m
G-Wheel Base	1.96m
PERFORMANCE	
Platform Capacity	230kg
Max. Drive Speed (Stowed)	4.8km/h
Gradeability	30%
Turning Radius(In.)	0.8m
Turning Radius(Out.)	2.3m
Turntable Rotation	355°Non-Continuous
Vertical JIB rotation	±80°
Platform Rotation	±85°
H- Turntable Tailswing	130mm
Tilt Rating	3°
Max. Wind Speed	12.5m/s
POWER	
Batteries(V/Ah)	48V/310Ah
Charger	100-240VAC/13.5A
Drive Motor	3.3kw
Lift Motor	5kw
Hydraulic Oil Tank Capacity	19L
Tires	22x7x17.5/25.6x7x21
WEIGHT	
Weight	7100kg



HA14JE

GB/CE/ANSI Compliant

HIGHLIGHTS

- AC motor drive, smooth driving, better micro mobility.
- High-precision overload sensing system to reduce accidental and false alarm shutdown.
- Integrated rotary reducer makes smooth turning, comprehensive protection can adapt to dust environment.
- Large capacity batteries, strong endurance.



Configurations

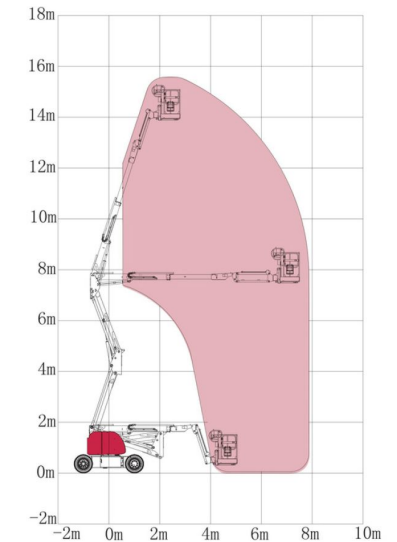
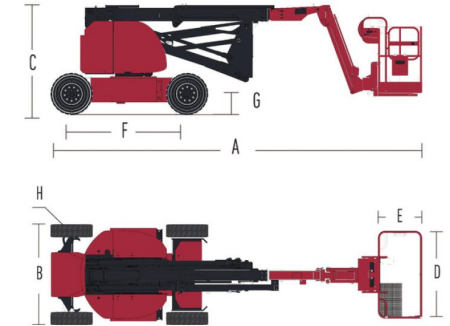
- | | |
|--------------------------|-----------------------------|
| Horn | Automatic Leveling Platform |
| Proportional Controls | Fault Diagnosis System |
| Motion Alarm | Overload Sensing System |
| Flashing Beacons | Self-lock Gate |
| Emergency Descent System | Anti-extrusion device |
| Emergency Stop | |

Optional

- AC Power to the Platform
- Air Pipe to the Platform

Always Lifting
Always Growing

MODEL	HA14JE
Max. Working Height	16m
Max. Platform Height	14m
Max. Horizontal Extension	7.5m
Max. Up and Over Height	7.54m
A- Length (Stowed)	6.4m
B- Width (Stowed)	1.75m
C- Height (Stowed)	1.93m
D- Platform Length	1.52m
E- Platform Width	0.76m
F- Wheelbase	2.01m
G- Ground Clearance	0.2m
PERFORMANCE	
Platform Capacity	230kg
Max. Drive Speed (Stowed)	4.8km/h
Gradeability	30%
Turning Radius(In.)	0.8m
Turning Radius(Out.)	3.8m
Turntable Rotation	355°
Platform Rotation	±90°
H Tail Swing	0
Tilt Rating	3°
Operating Wind Speed	12.5m/s
POWER	
Batteries (V/Ah)	48V/310Ah
Charger	100-240VAC/13.5A
Tires	705X210X445
WEIGHT	
Weight	7070kg
Hydraulic Tank Capacity	20L



HA16JE

GB/CE/ANSI Compliant

HIGHLIGHTS

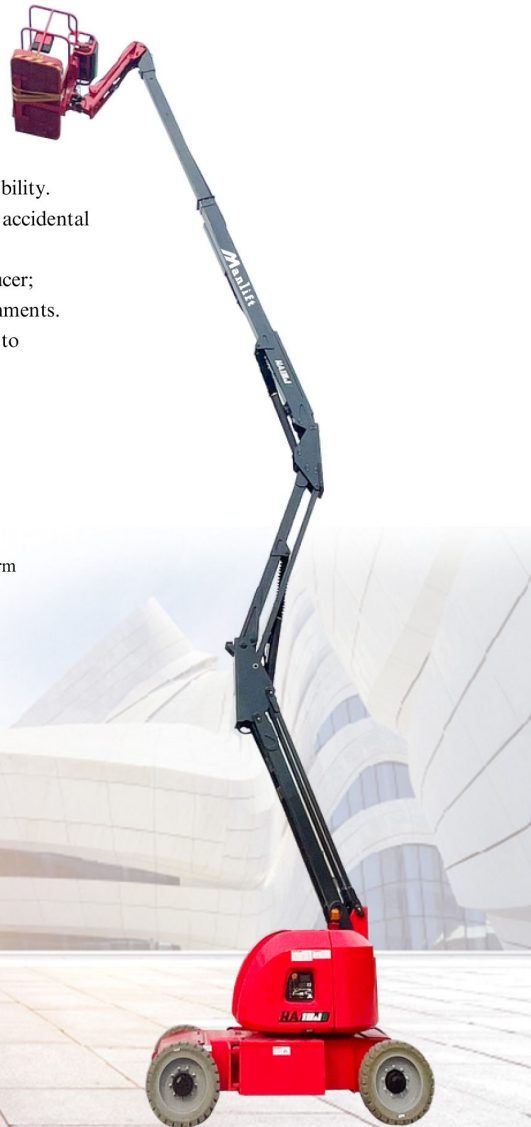
- AC motor drive, smooth driving, better micro mobility.
- High-precision overload sensing system to reduce accidental and false alarm shutdown.
- Smoother slew ensured by integrated slewing reducer; comprehensive protections suitable for dusty environments.
- Smoother actions and more energy saving thanks to zero-emission devices
- Large capacity battery with strong endurance.

Configurations

- | | |
|--------------------------|-----------------------------|
| Horn | Automatic Leveling Platform |
| Proportional Controls | Fault Diagnosis System |
| Motion Alarm | Overload Sensing System |
| Flashing Beacons | Self-lock Gate |
| Emergency Descent System | Anti-extrusion device |
| Emergency Stop | |

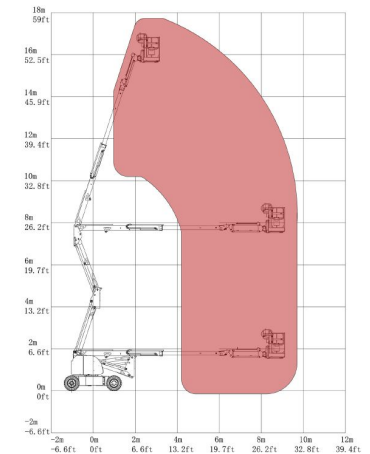
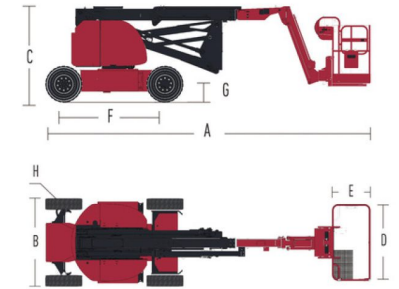
Optional

- AC Power to the Platform
- Air Pipe to the Platform



Always Lifting
Always Growing

MODEL	HA16JE
Max. Working Height	17.7m
Max. Platform Height	15.7m
Max. Horizontal Extension	9.13m
Max. Up and Over Height	7.6m
A- Length (Stowed)	6.98m
B- Width (Stowed)	1.9m
C- Height (Stowed)	1.96m
D- Platform Length	1.52m
E- Platform Width	0.76m
F- Wheelbase	2.01m
G- Ground Clearance	0.23m
PERFORMANCE	
Platform Capacity	230kg
Max. Drive Speed (Stowed)	4.8km/h
Gradeability	30%
Turning Radius(In.)	0.8m
Turning Radius(Out.)	3.8m
Turntable Rotation	355°
Platform Rotation	±90°
H Tail Swing	0.9
Tilt Rating	4.5°
Operating Wind Speed	12.5m/s
Lift Motor	5kw
Drive Motor	5kw
POWER	
Batteries(V/Ah)	48V/310Ah
Charger	100-240VAC/13.5A
Tires	705X210X445
WEIGHT	
Weight	7800kg



HA21JE

GB/CE/ANSI Compliant

HIGHLIGHTS

- AC motor drive, smooth driving, better micro mobility.
- High-precision overload sensing system to reduce accidental and false alarm shutdown.
- Integrated rotary reducer makes smooth turning, comprehensive protection can adapt to dust environment.
- Large capacity batteries, strong endurance.



Configurations

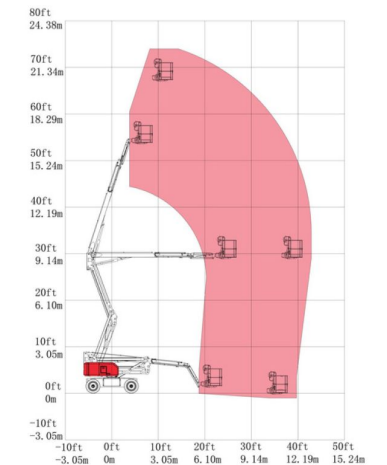
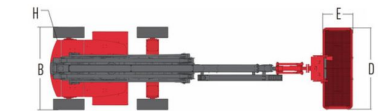
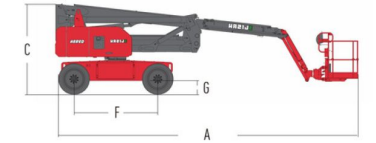
- | | |
|--------------------------|-----------------------------|
| Horn | Automatic Leveling Platform |
| Proportional Controls | Fault Diagnosis System |
| Motion Alarm | Overload Sensing System |
| Flashing Beacons | Self-lock Gate |
| Emergency Descent System | Anti-extrusion device |
| Emergency Stop | Tilt Protection System |
| Oscillating axle | Color Display |

Optional

- AC Power to the Platform
- Air Pipe to the Platform

Always Lifting
Always Growing

MODEL	HA21JE
Max. Working Height	22.55m
Max. Platform Height	20.55m
Max. Horizontal Extension	12.5m
Max. Up and Over Height	8.9m
A- Length (Stowed)	9.05m
B- Width (Stowed)	2.49m
C- Height (Stowed)	2.7m
D- Platform Length	2.4m
E- Platform Width	0.9m
F- Wheelbase	2.5m
G- Ground Clearance	0.31m
PERFORMANCE	
Platform Capacity	250kg
Max. Drive Speed (Stowed)	4.8km/h
Gradeability	45%
Turning Radius(In.)	2.42m
Turning Radius(Out.)	5.57m
Turntable Rotation	360°Continuous
Platform Rotation	±80°
H Tail Swing	0.6
Tilt Rating	5°
Operating Wind Speed	12.5m/s
Lift Motor	11kw
Drive Motor	3.3kw
POWER	
Batteries(V/Ah)	48V/440Ah
Charger	100-240VAC/16A
Tires	36X14-20
WEIGHT	
Weight	11000kg



HA19J

GB/CE/ANSI Compliant

HIGHLIGHTS

- Flexible movement, capable of achieving composite boom movements, with a wide range of operations.
- Four-wheel drive, floating axle design, better passability.
- Integrated rotary reducer makes smooth turning, comprehensive protection can adapt to dust environment.
- High-precision overload sensing system to reduce accidental false alarms and shutdowns.

FEATURES Standard

- Horn
- Automatic Leveling Platform
- Proportional Controls
- Fault Diagnosis System
- Motion Alarm
- Overload Sensing System
- Flashing Beacons
- Tilt Protection System
- Self-lock Gate
- Oscillating axle
- Emergency Descent System
- Color Display
- Emergency Stop System
- Anti-extrusion device

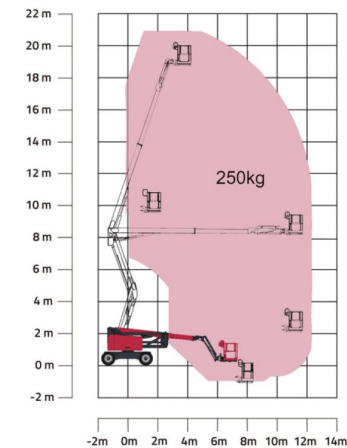
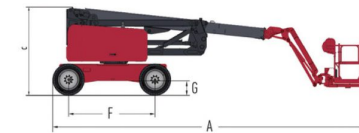
Optional

- AC Power to the Platform
- Air Pipe to the Platform



Always Lifting
Always Growing

MODEL	HA19J
Max. Working Height	20.77m
Max. Platform Height	18.77m
Max. Horizontal Extension	12m
Max. Up and Over Height	8.1m
A- Length (Stowed)	9.0m
B- Width (Stowed)	2.49m
C- Height (Stowed)	2.697m
D- Platform Length	2.4m
E- Platform Width	0.9m
F- Wheelbase	2.5m
G- Ground Clearance	0.31m
PERFORMANCE	
Platform Capacity	250kg
Max. Drive Speed (Stowed)	4.8km/h
Gradeability	45%
Turning Radius(In.)	2.42m
Turning Radius(Out.)	5.57m
Turntable Rotation	360°Continuous
Platform Rotation	±90°
H Tail Swing	0
Tilt Rating	5°
Operating Wind Speed	12.5m/s
POWER	
Engine	Kubota V2403
Rated power	36.5KW
Tires	36X14-20
WEIGHT	
Weight	11000kg
Hydraulic Tank Capacity	130L
Fuel Tank Capacity	120L



HA12C

GB/CE/ANSI Compliance

HIGHLIGHTS

- Hydraulic motor + tracks provide strong maneuverability, allowing for in-place turning and adaptability to various complex working conditions.
- High-precision platform load sensing system reduces false alarms and unexpected shutdowns.
- Integrated slewing reducer ensures smoother rotation; comprehensive protection makes it suitable for dusty environments.
- Proportional action control + load-sensing travel system ensures smooth movements and greater energy efficiency.
- Proportional action control + load-sensing travel system ensures smooth movements and greater energy efficiency.

FEATURES Standard

- Horn
- Emergency Descent System
- Proportional Controls
- Emergency Stop System
- Motion Alarm
- Automatic Leveling Platform
- Flashing Beacons
- Fault Diagnosis System
- Self-lock Gate
- Overload Sensing System
- Anti-extrusion device

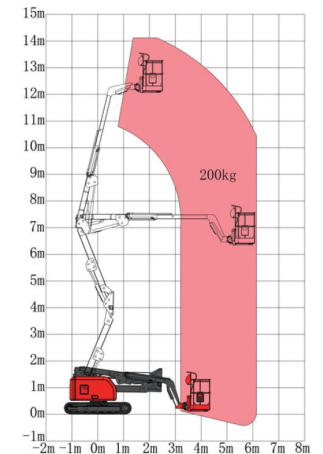
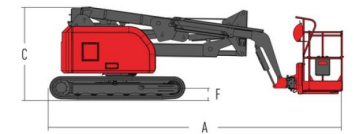
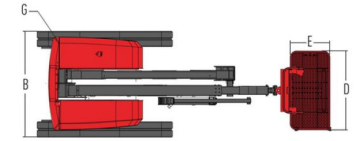
Optional

- AC Power to the Platform
- Air Pipe to the Platform



Always Lifting
Always Growing

MODEL	HA12C
Max. Working Height	14.1m
Max. Platform Height	12.1m
Max. Horizontal Extension	6m
Max. Up and Over Height	6.5m
A-Length (Stowed)	5.6m
B-Width (Stowed)	2.05m
C-Heights (Stowed)	1.9m
D- Platform Length	1.52m
E- Platform Width	0.76m
F-Clearance (Stowed)	205mm
PERFORMANCE	
Platform Capacity	200kg
Max. Drive Speed (Stowed)	1.3km/h
Gradeability	35%
Turning Radius	Rotate in Place
Turntable Rotation	360°Continuous
Platform Rotation	±80°
G Tail Swing	55mm
Tilt Rating	3°
Operating Wind Speed	12.5m/s
POWER	
Engine	Kubota D1105
Rated power	18.5kw
Crawler	300mmX52.5mmX104
WEIGHT	
Hydraulic Tank Capacity	90L
Fuel Tank Capacity	43L
Weight	4400KG



HA12CEA

GB/CE/ANSI Compliant

HIGHLIGHTS

- Environmental friendliness, low noise, zero emission, and maintenance-free large-capacity lithium batteries.
- Precise and efficient AC drive system for strong power and smooth control.
- Smooth and efficient compound boom actions from fully electric proportional control.
- Fully automatic or manual chassis leveling achievable during travel; chassis leveling actions done with real-time load flow distribution system for increased operation smoothness.
- Remote control within 200 m.
- Detachable tray on bottom of lithium battery for easy battery replacement.
- Smoother slew ensured by integrated slewing reducer; comprehensive protections suitable for dusty environments.



FEATURES Standard

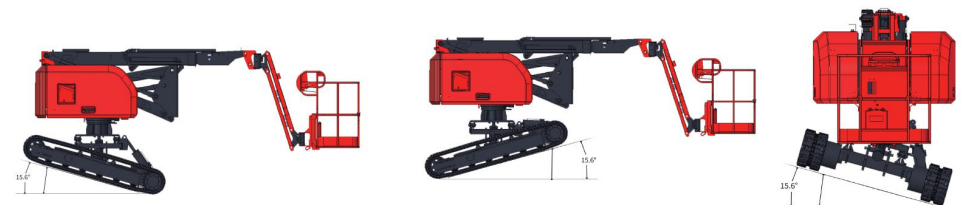
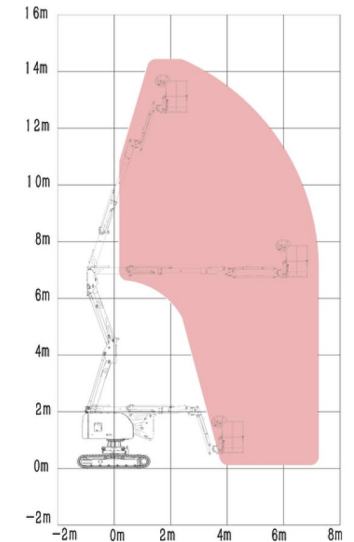
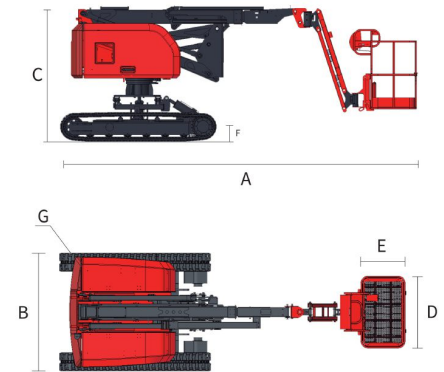
- Automatic Leveling Platform
- Auto leveling chassis
- Flashing Beacons
- platform self-lock door
- Horn
- Color Display
- Fault Diagnosis System
- Emergency Decent System
- Motion Alarm
- Emergency Stop
- Remote control
- Lithium Battery

Optional

- AC Power to the Platform
- Air Pipe to the Platform

Always Lifting
Always Growing

MODEL	HA12CEA
Max. Working Height	14.6m
Max. Platform Height	12.6m
Max. Horizontal Extension	6.82m
Max. Up and Over Height	6.79m
A-Length (Stowed)	5.9m
B-Width (Stowed)	1.92m
C-Heights (Stowed)	2.23m
D- Platform Length	1.18m
E- Platform Width	0.76m
F-Clearance (Stowed)	164mm
PERFORMANCE	
Platform Capacity	200kg
Max. Drive Speed (Stowed)	1.3km/h
Gradeability	45%
Turning Radius	Rotate in Place
Turntable Rotation	355°Non-Continuous
Vertical JIB rotation	±80°
Platform Rotation	±85°
G Tail Swing	167mm
Tilt Rating	2°
Operating Wind Speed	12.5m/s
Chassis leveling angle (front and rear)	15.6°
Chassis leveling angle (left and right)	15.6°
POWER	
Batteries(V/Ah)	48V/304AH
Charger	100-240VAC/16A
Drive Motor	AC48V/5KW
Hydraulic Tank Capacity	54L
Lift Motor	AC48V/5KW
Crawler	300X52.5X104
WEIGHT	
Weight	5250KG



HT16JE

GB/CE/ANSI Compliance

HIGHLIGHTS

- Environmental friendliness, low noise, zero emission, and maintenance-free large-capacity lithium batteries.
- Precise and efficient AC drive system for strong power and smooth control.
- Smooth and efficient compound boom actions from fully electric proportional control; possible boom lowering with its own weight for energy saving and reduced consumption.
- Human-machine interaction interface and fault self-diagnosis system.
- High gradeability and off-road capability as a result of floating bridge design.



FEATURES Standard

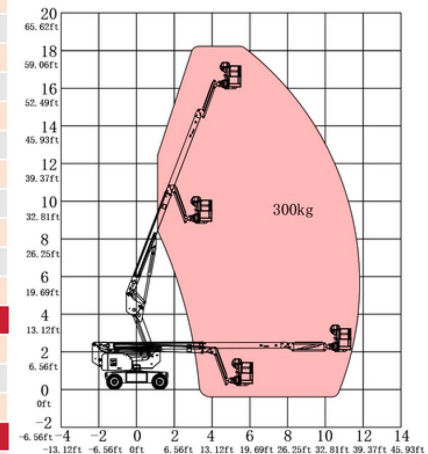
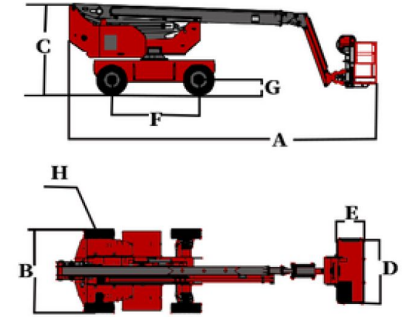
- | | |
|-----------------------------|--------------------------|
| Horn | |
| Automatic Leveling Platform | |
| Proportional Controls | |
| Fault Diagnosis System | Motion Alarm |
| Overload Sensing System | Flashing Beacons |
| Tilt Protection System | Self-lock Gate |
| Oscillating axle | Emergency Descent System |
| Color Display | Anti-extrusion device |
| Emergency Stop System | |

Optional

- AC Power to the Platform
- Air Pipe to the Platform

Always Lifting
Always Growing

MODEL	HT16JE
Max. Working Height	18.2m
Max. Platform Height	16.2m
Max. Horizontal Extension	11.9m
A-Length (Stowed)	8.5m
B-Width (Stowed)	2.31m
C-Heights (Stowed)	2.51m
D- Platform Length	1.83m
E- Platform Width	0.76m
F- Wheelbase	2.4m
G- Ground Clearance	0.3m
Wheel track	2.05m
PERFORMANCE	
Platform Capacity	300kg
Max. Drive Speed	4.8km/h
Gradeability	40%
Turning Radius(In.)	2.62m
Turning Radius(Out.)	5m
Turntable Rotation	360°Continuous
Platform Rotation	±90°
Vertical JIB rotation	-70°to70°
Tilt Rating	5°
Operating Wind Speed	12.5m/s
Tail Swing	1.16m
Hydraulic Tank Capacity	70L
Auxiliary power	12V DC
Drive Method	FWD
Turn Method	Front
Lift Motor	11kw
Drive Motor	3.3kw
POWER	
Batteries(V/Ah)	48V304Ah
Charger	100-240VAC/16A
Tires	33X12-20
WEIGHT	
Weight	7900kg



HT22JE

GB/CE/ANSI Compliance

HIGHLIGHTS

- Flexible movement, capable of achieving composite boom movements, with a wide range of operations.
- Four-wheel drive, floating axle design, better passability.
- Integrated rotary reducer makes smooth turning, comprehensive protection can adapt to dust environment.
- High-precision overload sensing system to reduce accidental false alarms and shutdowns.

FEATURES Standard

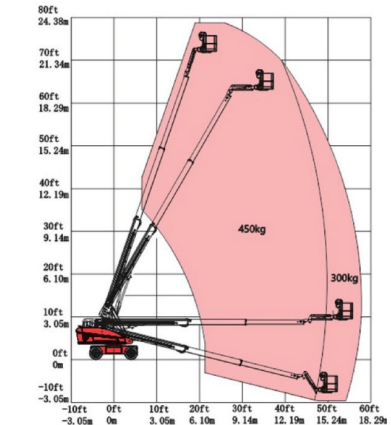
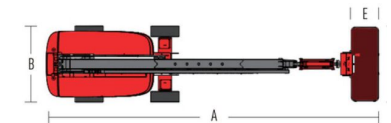
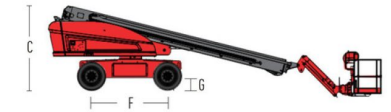
- | | |
|-----------------------------|--------------------------|
| Horn | |
| Automatic Leveling Platform | |
| Proportional Controls | |
| Fault Diagnosis System | Motion Alarm |
| Overload Sensing System | Flashing Beacons |
| Tilt Protection System | Self-lock Gate |
| Oscillating axle | Emergency Descent System |
| Color Display | Anti-extrusion device |
| Emergency Stop System | |

Optional

- AC Power to the Platform
- Air Pipe to the Platform

Always Lifting
Always Growing

MODEL	HT22JE
Max. Working Height	24m
Max. Platform Height	22m
Max. Horizontal Extension	17m
A-Length (Stowed)	10.9m
B-Width (Stowed)	2.49m
C-Heights (Stowed)	2.77m
D- Platform Length	2.44m
E- Platform Width	0.91m
F- Wheelbase	2.5m
G- Ground Clearance	0.305m
Wheel track	2.5m
PERFORMANCE	
Platform Capacity(unrestricted/restricted)	300kg/450kg
Max. Drive Speed (Stowed)	4.8km/h
Gradeability	45%
Turning Radius(In.)	2.9m
Turning Radius(Out.)	5.5m
Turntable Rotation	360°Continuous
Platform Rotation	160°
Vertical JIB rotation	*-65°to78°
Tilt Rating	5°
Operating Wind Speed	12.5m/s
Tail Swing	1.42m
Lift Motor	24kw
Drive Motor	3.3kw
POWER	
Batteries(V/Ah)	80V/460Ah
Charger	100-240VAC/32A
Tires	36X14-20
WEIGHT	
Weight	13000kg
Hydraulic Tank Capacity	170L



HT26JE

GB/CE/ANSI Compliance

HIGHLIGHTS

- Eco-friendly, low noise, zero emissions, maintenance-free high-capacity lithium battery
- Industry-leading platform with dual load capacities of 300KG/450KG
- Precise and efficient AC drive system, powerful performance, and smooth control
- Fully electric proportional control, boom can perform compound movements, smooth and efficient, boom weight reduction for energy saving and reduced consumption
- Human-machine interaction interface and self-diagnostic fault system
- Floating bridge design, high passability and off-road capability

FEATURES Standard

- | | |
|--------------------------|-----------------------------|
| Horn | Automatic Leveling Platform |
| Proportional Controls | Fault Diagnosis System |
| Motion Alarm | Overload Sensing System |
| Flashing Beacons | Tilt Protection System |
| Self-lock Gate | Oscillating axle |
| Emergency Descent System | Color Display |
| Emergency Stop System | Lithium battery |
| Anti-extrusion device | |

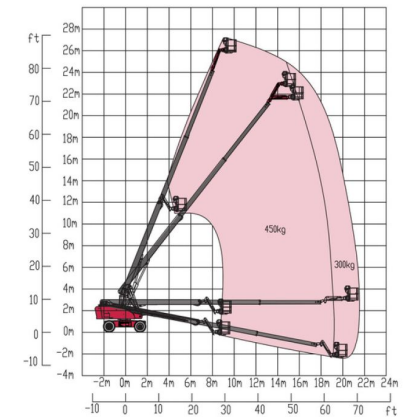
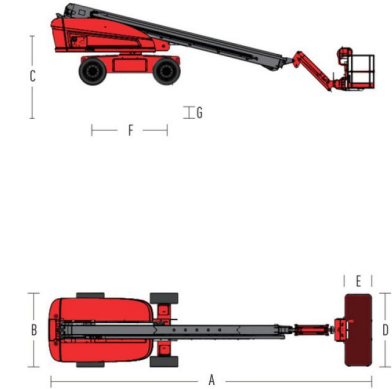
Optional

- AC Power to the Platform
- Air Pipe to the Platform



Always Lifting
Always Growing

MODEL	HT26JE
Max. Working Height	27.9m
Max. Platform Height	25.9m
Max. Horizontal Extension	21.4m
A-Length (Stowed)	12.8m
B-Width (Stowed)	2.49m
C-Heights (Stowed)	2.85m
D- Platform Length	2.44m
E- Platform Width	0.91m
F- Wheelbase	2.85m
G- Ground Clearance	0.32m
Wheel track	2.11m
PERFORMANCE	
Platform Capacity(unrestricted/restricted)	300kg/450kg
Max. Drive Speed (Stowed)	4.8km/h
Gradeability	45%
Turning Radius(In.)	3.28m
Turning Radius(Out.)	6.5m
Turntable Rotation	360°Continuous
Platform Rotation	160°
Vertical JIB rotation	-65°to 78°
Tilt Rating	5°
Operating Wind Speed	12.5m/s
Tail Swing	1.58m
Lift Motor	24Kw
Drive Motor	5.2Kw
POWER	
Batteries(V/Ah)	80V460AH
Charger	100-240VAC/32A
Tires	385/65-22.5
WEIGHT	
Weight	18450kg
Hydraulic Tank Capacity	170L



HT20J

GB/CE/ANSI Compliance

HIGHLIGHTS

- Flexible movement, capable of achieving composite boom movements, with a wide range of operations.
- Four-wheel drive, floating axle design, better passability.
- Integrated rotary reducer makes smooth turning, comprehensive protection can adapt to dust environment.
- High-precision overload sensing system to reduce accidental false alarms and shutdowns.

FEATURES Standard

- Horn
- Automatic Leveling Platform
- Proportional Controls
- Fault Diagnosis System
- Motion Alarm
- Overload Sensing System
- Flashing Beacons
- Tilt Protection System
- Self-lock Gate
- Oscillating axle
- Emergency Descent System
- Color Display
- Emergency Stop System
- Released Type Engine Tray
- Anti-extrusion device

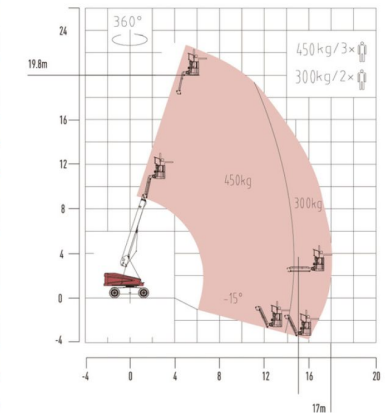
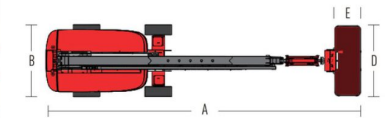
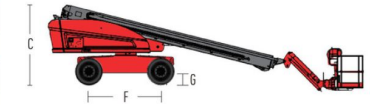
Optional

- AC Power to the Platform
- Air Pipe to the Platform

Always Lifting
Always Growing



MODEL	HT20J
Max. Working Height	21.8m
Max. Platform Height	19.8m
Max. Horizontal Extension	16.6m
A- Length (Stowed)	9.76m
B- Width (Stowed)	2.49m
C- Height (Stowed)	2.77m
D- Platform Length	2.44m
E- Platform Width	0.91m
F- Wheelbase	2.5m
Wheel track	2.1m
G- Ground Clearance	0.31m
PERFORMANCE	
Platform Capacity(unrestricted/restr)	300kg/450kg
Max. Drive Speed (Stowed)	4.8km/h
Gradeability	45%
Turning Radius(In.)	2.42m
Turning Radius(Out.)	5.57m
Turntable Rotation	360° Continuous
Platform Rotation	-80° to 80°
Vertical JIB rotation	-65° to 78°
Tilt Rating	5°
Operating Wind Speed	12.5m/s
Tail Swing	1.42m
POWER	
Engine	Kubota V2403
Fuel Tank Capacity	130L
Control Voltage	12V
Hydraulic Tank Capacity	170L
Drive Method	FWD
Turn Method	Front
Tires	36X14-20
WEIGHT	
Weight	12100kg





General Scissor
Lift



Crawler Scissor
Lift



Rough Terrain
Lift



Articulating Boom
Lift



Telescopic Boom
Lift



Vertical Mast
Lift

CONTACT US

PT. HASTA KARYA ANANTA

Jl. Benteng Betawi, RT.001/RW.015, Tanah Tinggi, Kec. Tangerang, Kota Tangerang
Banten 15119, Indonesia

Tel: +62 21-2986-0544

Hotline: +62 819-1980-2323

Email: hasta@hka.co.id

Website: www.hka.co.id

Manlift

ALWAYS LIFTING ALWAYS GROWING